



Catalog Number: JX10025

Package size: 25, 100µl

Store at: -20°C

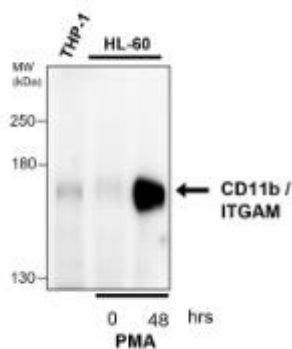
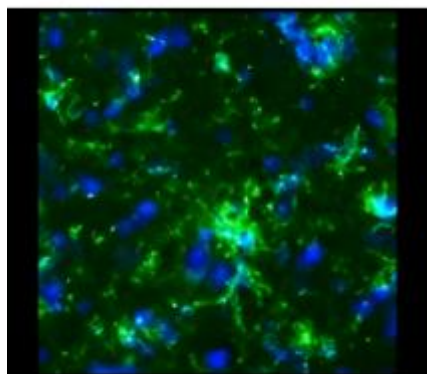
## CD11b / ITGAM (human specific) antibody

<b>Product Name</b>	CD11b / ITGAM (human specific) antibody
<b>Product Number</b>	JX10025
<b>Host</b>	Rabbit
<b>Clonality</b>	Polyclonal
<b>Application</b>	WB, IHC-P, IHC-fr
<b>Species Reactivity</b>	Human
<b>Isotype</b>	IgG
<b>Storage</b>	Store as concentrated solution. Centrifuge briefly prior to opening vial. For short-term storage (1-2 weeks), store at 4°C. For long-term storage, aliquot and store at -20°C or below. Avoid multiple freeze-thaw cycles.
<b>Storage Buffer</b>	100mM Tris Glycine, 20% Glycerol (pH7) contains 0.025% ProClin 300
<b>Form</b>	Liquid
<b>Recommended Applications Dilutions</b>	Western Blot 1:500 - 1:1000 Immunohistochemistry (Paraffin) 1:100 Immunohistochemistry (Frozen) 1:100
<b>Notes</b>	Gently mix before use. Optimal concentrations and conditions for each application should be determined by the user.

IHC-fr analysis of paraformaldehyde-fixed hippocampus tissue section using JX10025 CD11b / ITGAM (human specific) antibody.  
Antigen retrieval: 10 mM Citrate, pH 6.0

WB analysis of various sample extracts using JX10025 CD11b / ITGAM (human specific) antibody.  
Loading amount: 50 µg per lane  
Dilution: 1:500

IHC-P analysis of human cancer tissue section using JX10025 CD11b / ITGAM (human specific) antibody.  
Dilution: 1:200



IHC-P analysis of human cancer tissue section using JX10025 CD11b / ITGAM (human specific) antibody.  
Dilution: 1:200

