



Catalog Number: JX10006

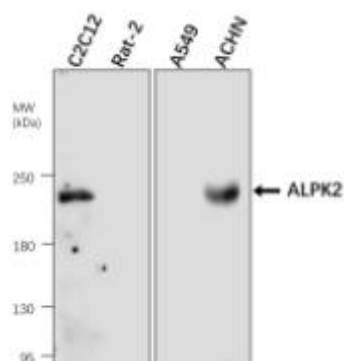
Package size: 25, 100µl

Store at: -20°C

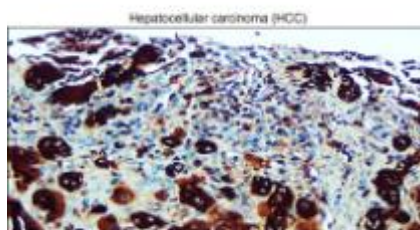
ALPK2 antibody

Product Name	ALPK2 antibody
Product Number	JX10006
Host	Rabbit
Clonality	Polyclonal
Application	WB, ICC/IF, IHC-P
Species Reactivity	Human, Mouse, Rat
Isotype	IgG
Storage	Store as concentrated solution. Centrifuge briefly prior to opening vial. For short-term storage (1-2 weeks), store at 4°C. For long-term storage, aliquot and store at -20°C or below. Avoid multiple freeze-thaw cycles.
Storage Buffer	100mM Tris Glycine, 20% Glycerol (pH7) contains 0.025% ProClin 300
Form	Liquid
Recommended Applications Dilutions	Western Blot 1:1000 Immunocytochemistry / Immunofluorescence 1:200 – 1:500 Immunohistochemistry (Paraffin) 1:200 – 1:500
Notes	Gently mix before use. Optimal concentrations and conditions for each application should be determined by the user.

WB analysis of various sample extracts using JX10006 ALPK2 antibody.
Loading amount: 40 µg per lane



IHC-P analysis of hepatocellular carcinoma (HCC) tissue section using JX10006 ALPK2 antibody.
Dilution: 1:200



IHC-P analysis of hepatocellular carcinoma (HCC) tissue section using JX10006 ALPK2 antibody.
Dilution: 1:200

