



Catalog Number: JX10005

Package size: 25, 100µl

Store at: -20°C

Alpha-synuclein / SNCA / α-syn antibody

Product Name	Alpha-synuclein / SNCA / α-syn antibody
Product Number	JX10005
Host	Rabbit
Clonality	Polyclonal
Application	WB, ICC/IF, IHC-Fr
Species Reactivity	Human, Mouse, Rat
Isotype	IgG
Storage	Store as concentrated solution. Centrifuge briefly prior to opening vial. For short-term storage (1-2 weeks), store at 4°C. For long-term storage, aliquot and store at -20°C or below. Avoid multiple freeze-thaw cycles.
Storage Buffer	100mM Tris Glycine, 20% Glycerol (pH7) contains 0.025% ProClin 300
Form	Liquid
Recommended Applications Dilutions	Western Blot 1:500-1:1000 Immunocytochemistry / Immunofluorescence 1:200-1:300 Immunohistochemistry (Frozen) 1:100-1:200
Notes	Gently mix before use. Optimal concentrations and conditions for each application should be determined by the user.

IHC-fr analysis of mouse cerebellum tissue section using JX10005 Alpha-synuclein / SNCA / α-syn antibody.

Dilution: 1:400

WB analysis of various sample extracts using JX10005 Alpha-synuclein / SNCA / α-syn antibody.

Loading amount: 60 µg per lane

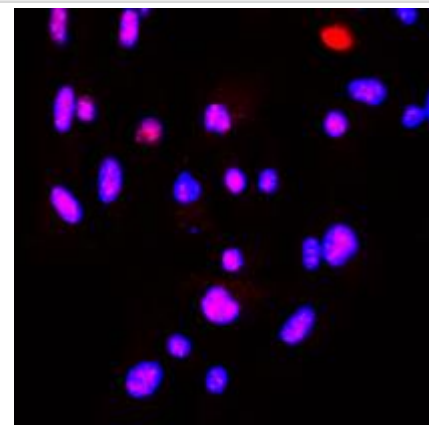
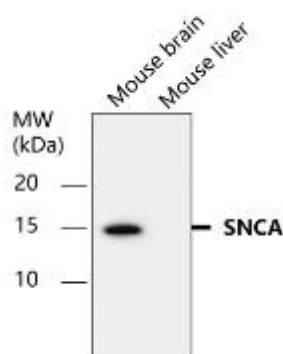
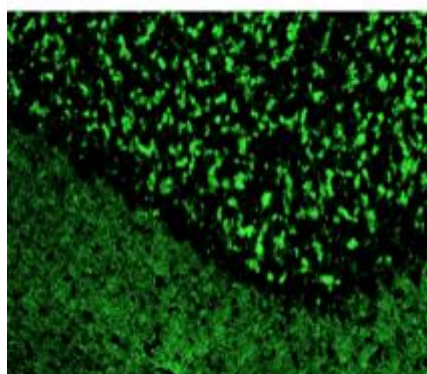
Dilution: 1:700

ICC/IF analysis of 4% paraformaldehyde fixed cells using JX10005 Alpha-synuclein / SNCA / α-syn antibody (Red)

counterstained with DAPI (blue).

Permeabilization: 0.1% NP-40 for 10 min at RT

Dilution: 1:200



ICC/IF analysis of 4% paraformaldehyde
fixed primary cortical neurons using
JX10005 Alpha-synuclein / SNCA / α -syn
antibody.

Dilution: 1:400

